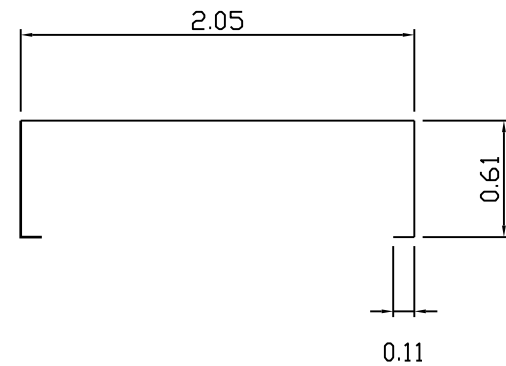
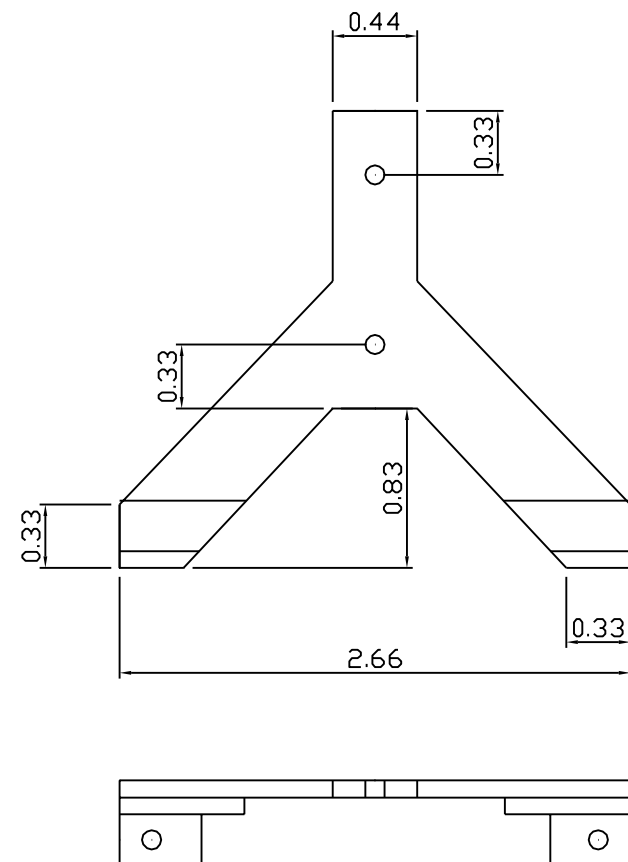


Spring 20 swg  
(smooth end points)



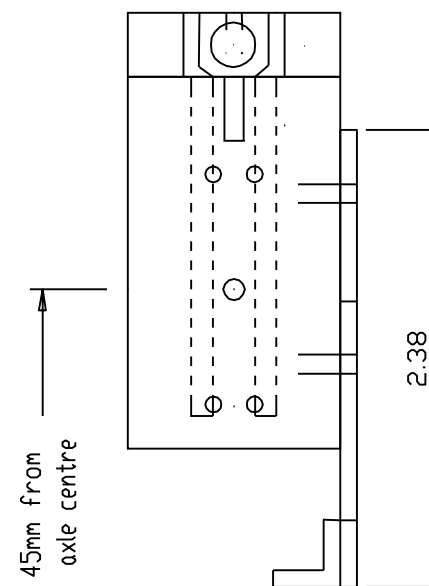
Cylinder Support Plate

1/16" (1.5mm) sheet brass  
and 1/4" (6mm) angle  
solder and rivet joints



holes 1.8mm (10BA clearance)

bolt port block to  
cylinder support



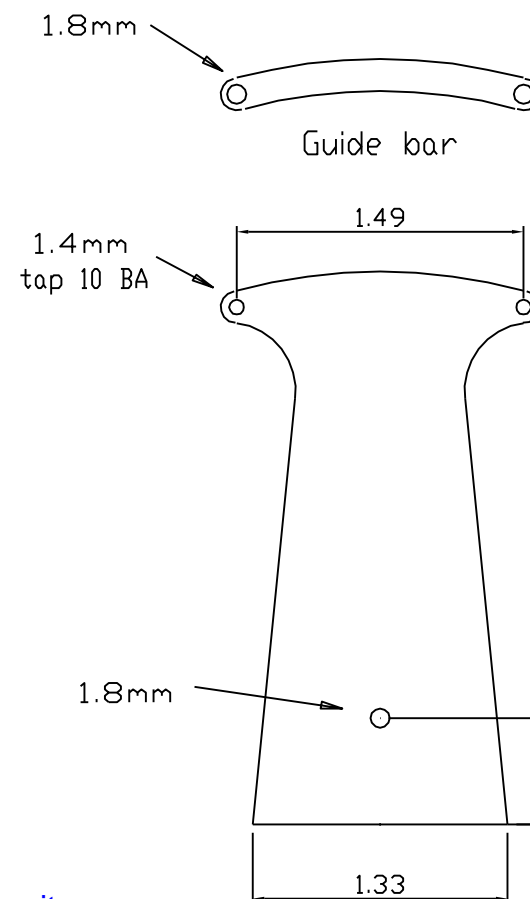
1.8mm  
bolt to reversing valve  
plan



Reverser stand

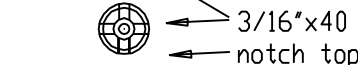
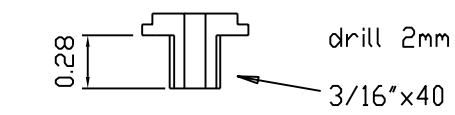
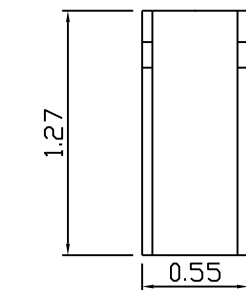
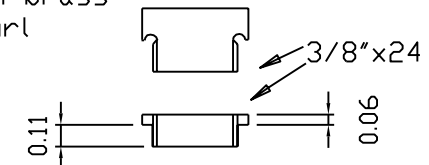
3/64" (1.5mm) brass  
assemble with 10 BA bolts  
fix to footplate with 1/4" angle

Spacer, two off

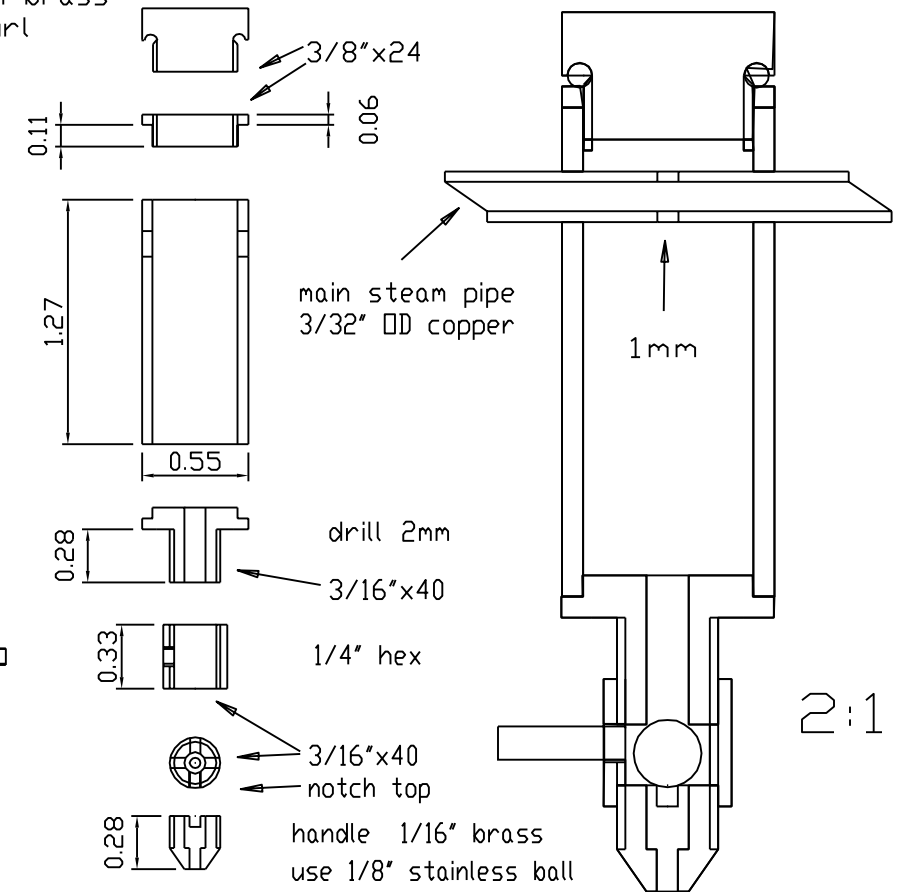


10 B.A.

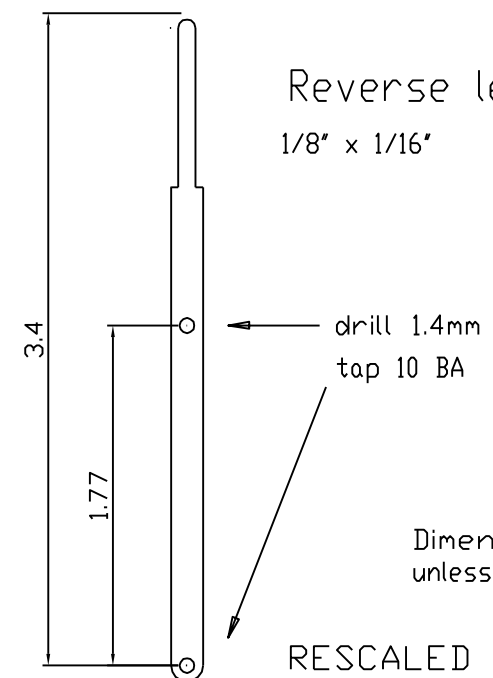
filler cap  
10mm brass  
knurl



Lubricator  
from 10mm brass tube



Reverse lever  
1/8" x 1/16"



Dimensions inches  
unless otherwise specified

RESCALED TO 7/8N2 1:13.7  
2.10.07

Components for de Winton  
Dave Watkins  
9/8/97